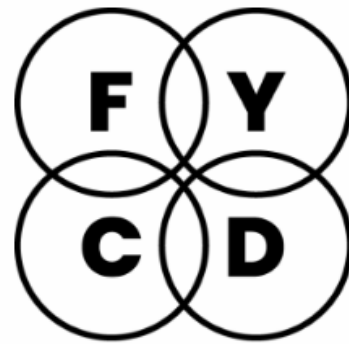


# Fix Your Content Day 2024

September 16, 2024





**ANTHOLOGY ALLY**

**Fix Your  
Content Day**

---

20 Key Q&A

September 16, 2024

# Meet your Presenters



---

Karina Estrada

Community Product Manager

[Karina.estrada@anthology.com](mailto:Karina.estrada@anthology.com)



---

Katie Grennell, PhD

Accessibility Strategist  
Global Education Services

[Kgrennell@anthology.com](mailto:Kgrennell@anthology.com)

---

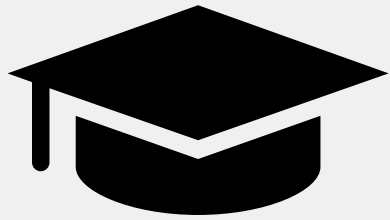


# Contextualizing FYCD

Who, What, When, Where,  
Why, and How?



# FYCD: The Who



---

Diverse Body of 21<sup>st</sup>  
Century Students



---

Faculty & Instructors



---

The Institution

# FYCD: The What

## Digital Accessibility

- “refers to the inclusive practice of removing barriers that prevent interaction with, or access to websites, digital tools and technologies, by people with disabilities.”

## Inclusive Learning

- teaching and learning environment that celebrates and honors the diversity of all learners by creating equitable access and encourages a sense of belonging and value.

## FYCD Context

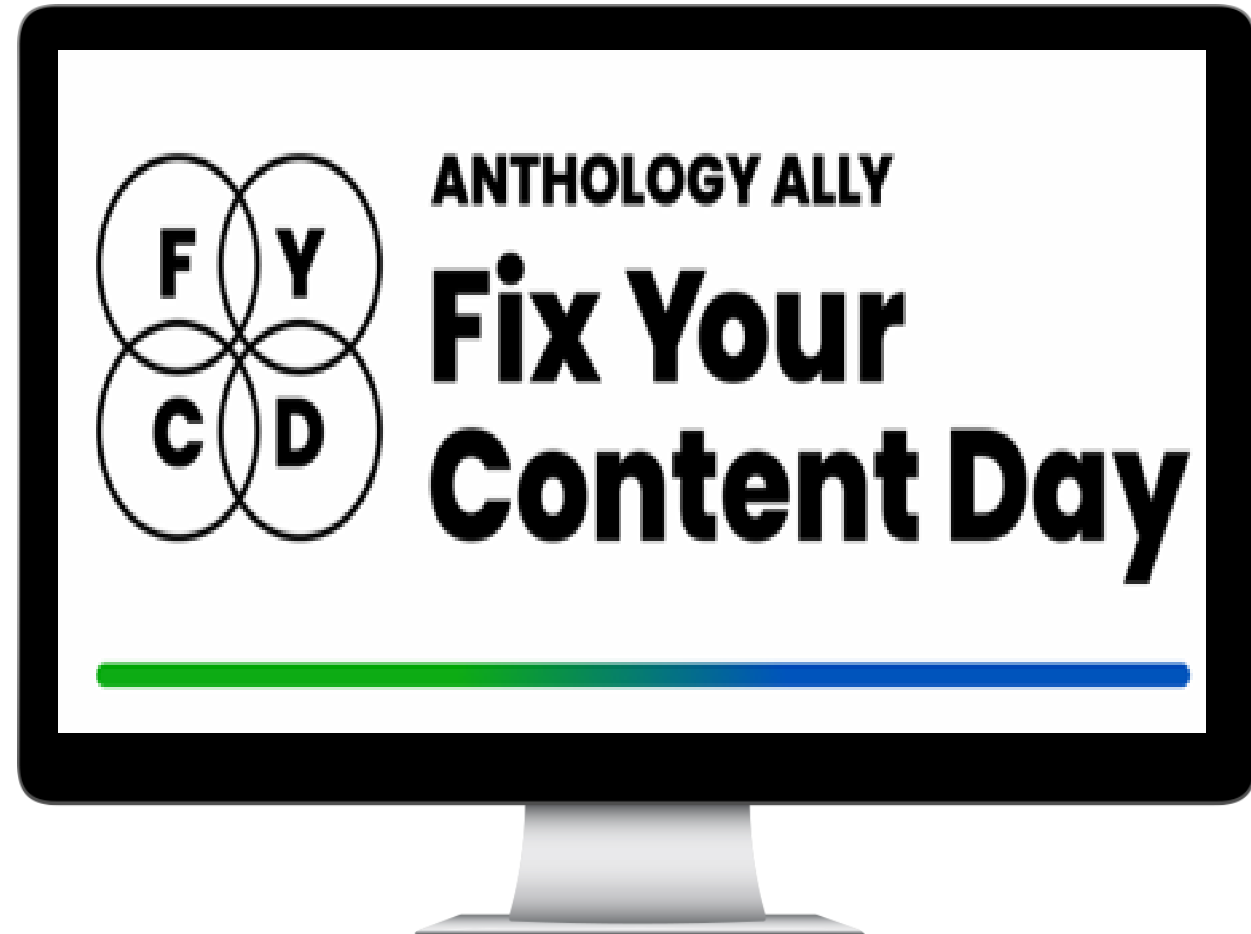
- FYCD History: 24-hour global contest encouraging colleges and universities to use Ally to make as many “fixes” as possible to course files.
  - 1<sup>st</sup> FYCD hosted in 2020!

# FYCD: The Why

- To expand access to digital course content for all students
- To encourage an inclusive learning environment
- To ensure an equitable, and digitally accessible online environment
- To avoid creating and sustaining unnecessary obstacles to learning
- To celebrate diversity
- To support instructors and faculty in their digital accessibility journey
- To compliment Global Accessibility Awareness Day (GAAD)
- To support Universal Design for Learning
- To engage with the larger Ally and/or accessibility community

# FYCD: The When, the Where, and the How

- Take it away, Karina!





# What is Fix Your Content Day (FYCD) ?

Question # **1**



Fix Your Content Day (FYCD) is a 24-hour contest committed to creating accessible and more inclusive digital learning content across classrooms and institutions globally. By enrolling in the competition, colleges and universities are challenged to use Anthology Ally to make as many “fixes” as possible to course files and improve their accessibility.

**Thursday, October 3, 2024**

5<sup>th</sup> year of FYCD

<https://www.anthology.com/fix-your-content-day>

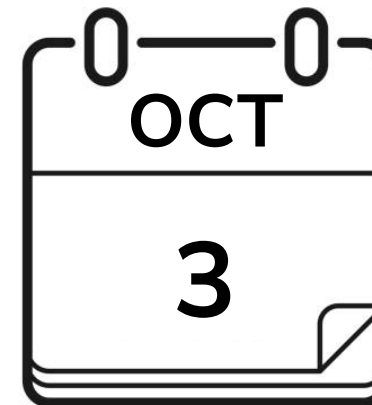


# How was FYCD born?

Question # 2

Each year, the global accessibility community unites in May for [Global Accessibility Awareness Day](#) (GAAD) to highlight the need for more inclusive digital content. Since 2020, Anthology has joined this effort by hosting the Fix Your Content Day (FYCD) challenge to make a positive impact on inclusive learning around the globe.

In response to your valuable feedback, we've moved our **Fix Your Content Day** to a date more convenient for our community: Thursday, October 3, 2024.



2024

# Is this the same FYCD we know from last year?

Question #

3

Yes!



## 110,248

total fixes around the world

### FYCD 2023 Global Winners

**1st Place** - Coastal Pines Technical College - Part of TCSG

**2nd Place** - Georgia Piedmont Technical College - Part of TCSG

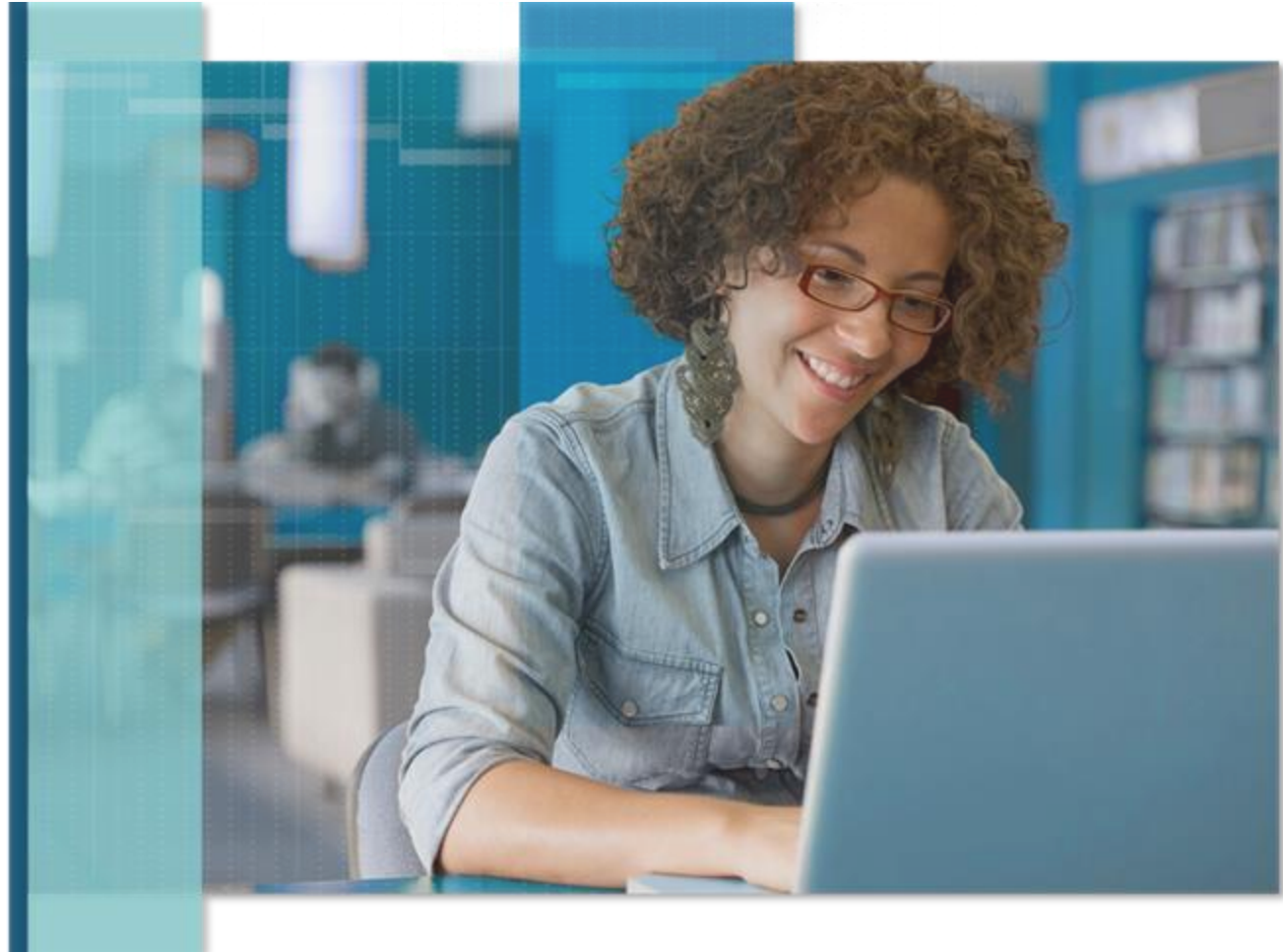
**3rd Place** - Ogeechee Technical College - Part of TCSG

# Is FYCD open for everyone?

Question #

4

Open to **current**  
Anthology Ally  
clients **ONLY**



# When does the Fix Your Content Day competition start and end?

Question # **5**



Time zone furthest east  
12 a.m. in Kiribati



Time zone furthest west  
11:59 p.m. in American Samoa

# How does Fix Your Content Day work?

Question #

6

## Fixing

Participants fix digital files through Anthology Ally. A “fix” is when the accessibility score of a file is improved.

## Recording

Each fix is recorded in the Anthology Ally database\* and will be reported in a live leaderboard that will contain “unofficial” results. Also, all fixes made using the new Instructor Feedback for WYSIWYG will contribute to the number of total fixes for

## Tracking

The Ally Team will track fixes in real-time, and participants can check fixes through the usage report in the Ally Institutional Report.

## Validation

After the challenge, the Ally Team will validate the results\*\*, and the final winners will be announced a week after the event.

# What information do you need to provide for registration?

Question #

7

## Register Now

First Name*	Last Name*
<input type="text" value="Eva"/>	<input type="text" value="Silva"/>
Email Address*	Company name*
<input type="text" value="evaxsilva401@gmail.com"/>	<input type="text" value="Anthology"/>
Your Country*	Are you currently using Ally? *
<input type="text" value="-- Please Select --"/>	<input type="text" value="Yes"/>
Your Institution Learning Management System URL*	Your Institution Logo URL (JPG or PNG – size: 200×200 pixels) *
<input type="text"/>	<input type="text"/>
Number of Full-Time Enrollments at your Institution - "Ex: 15000"*	
<input type="text"/>	
<input type="checkbox"/> Sign me up for emails with exclusive insights, upcoming events and webinars, and company updates.	
<input type="checkbox"/> By registering for the event, I agree to be bound by the <a href="#">Terms and Conditions</a> .*	
<input type="button" value="Register Now"/>	

### ■ Contact details

First name, last name, email address, institution name, and country.

### ■ Ally user?

**Yes** – LMS URL, logo URL and FTE

**No** – Can't participate

# Does an individual instructor register or does the institution register?

Question #

8



An **individual** instructor or **many** instructors can register, but the whole institution is the one who is participating in the challenge.



# Is there a minimum number of people required for a campus to participate?

Question #

9



**Small or large**  
groups can  
participate

# What are participants being judged on?

Question #

10



Total Number of Fixes



Fixes must be made directly within the institution's Anthology Ally User Interface to be counted in the contest.

## Tips & Strategies for Mobilizing Team Members

### FYCD 2024 Communications Pack

[https://www.anthology.com/fix-  
your-content-  
day/communications-pack](https://www.anthology.com/fix-your-content-day/communications-pack)



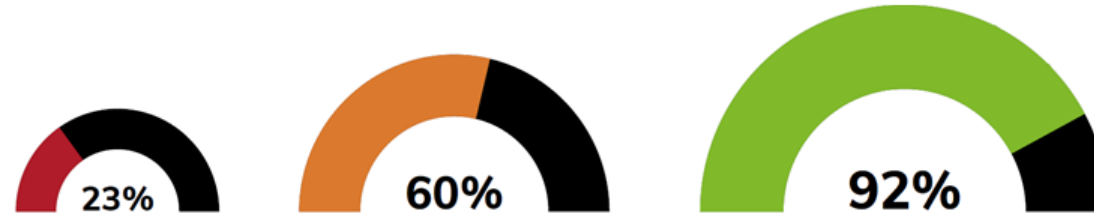
- ✓ **Email templates + signatures**
- ✓ **Videos**
  - Anthology Ally
  - “How to”
- ✓ **Assets**
  - Frequently Asked Questions (FAQs)
  - Rules
- ✓ **Soon to Come**
  - Visuals and Graphics
  - FYCD 2024 One Pager

# What does it count as a “fix”?

Question #

12

A “fix” occurs when the accessibility score of a file is improved through Anthology Ally.

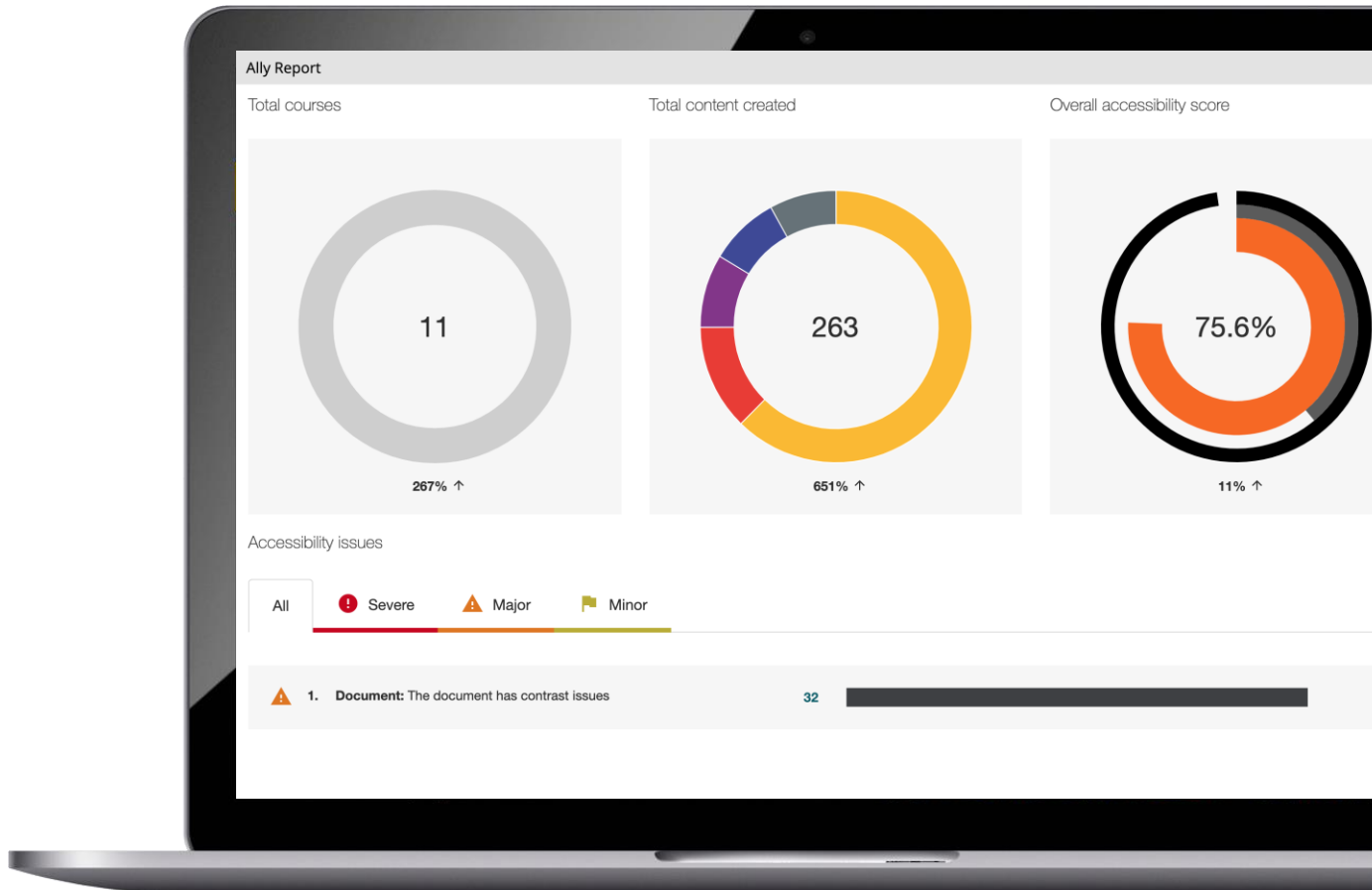


## Tips for improving accessibility scores:

- Images are typically regarded as the “easiest” and fastest files to improve because descriptions can be added directly through the Instructor Feedback panel.
- Uploading a fixed file through the [Instructor Feedback for WYSIWYG](#) panel also results in an improved score.
- A file does not have to reach 100% accessibility to be counted as a “fix.”

# How an institution can know more details about fixes of FYCD?

Question # **13**



Fixes can be check through the usage report in your **Ally Institutional Report**

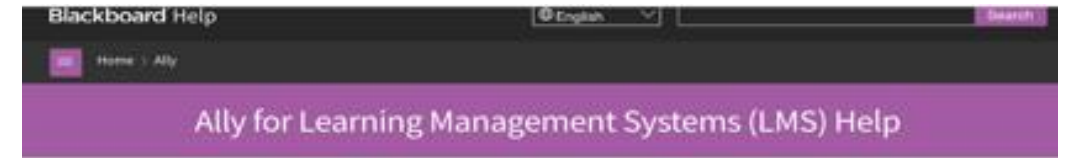
# Anthology Ally Help Pages

Visit and use our persona-based [Help.blackboard.com/Ally\\_for\\_LMS](https://help.blackboard.com/Ally_for_LMS)

- [Alternative Formats table and benefits](#)
- [Utilise the Communication & Adoption Toolkit](#)

Many institutions link to these pages, rather than rewrite content.

Sign up for [Release Notes](#) and have them emailed to you.



- Make your LMS digital content more accessible with Blackboard Ally.
- Integrates seamlessly with Blackboard Learn, Instructure Canvas, Self-hosted Moodle, Open LMS, and D2L Brightspace
  - Automatically checks course materials against WCAG 2.1 accessibility standards
  - Provides students with accessible alternative formats such as audio and electronic braille
  - Delivers guidance to instructors to improve accessibility of their course content

What type of help are you looking for?



Student



Instructor



Administrator



# Aren't bigger institutions at an advantage to fix more files?

Question #

14

Leaderboard ranks each  
participating institution by:

**Total Number of Fixes**

---

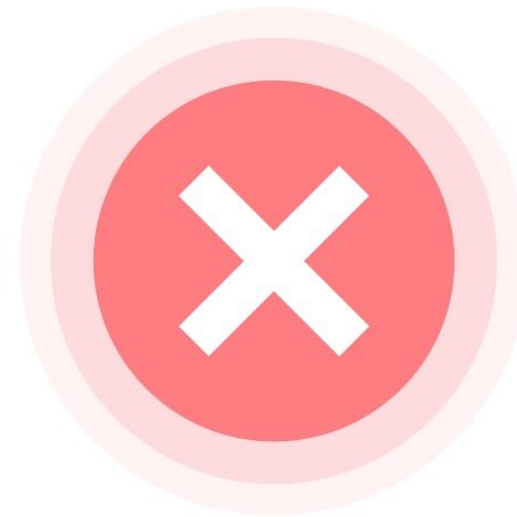
**Total Number of Students  
(FTE)\***

\*FTE will be the number you input during registration.

## Can we make the fixes on a different day?

Question # **15**

Fixes will only count towards the competition during your local 24-hour time period on **October 3, 2024.**





# How many winners does FYCD have?

## When and where will the winners be announced?

Question # **16**

✓ **3 Global Winners:** 1<sup>st</sup>, 2<sup>nd</sup>, and 3<sup>rd</sup> place

✓ **Regional Winners:**

- North America
- Europe and Middle East
- Asia Pacific
- Latin America

✓ **First Time Participant Winner**

▪ Leaderboard <https://ally.ac/gaad/>

▪ Social Media



▪ Ally User Group

- <https://usergroup.ally.ac>
- <https://community.anthology.com/groups/home/95>

## **Registration is required!**

The only way to enter the competition is by registering at

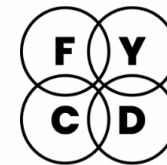
<https://www.anthology.com/fix-your-content-day>



# Why is Fix Your Content Day so important for institutions worldwide?



**Accessibility and inclusion is a journey, not a destination**



ANTHOLOGY ALLY

**Fix Your  
Content Day**

is the perfect opportunity to motivate campuses to improve the accessibility of course materials.

# What are the benefits of participating in Fix Your Content Day? Question # 19



**Thursday, October 3, 2024**

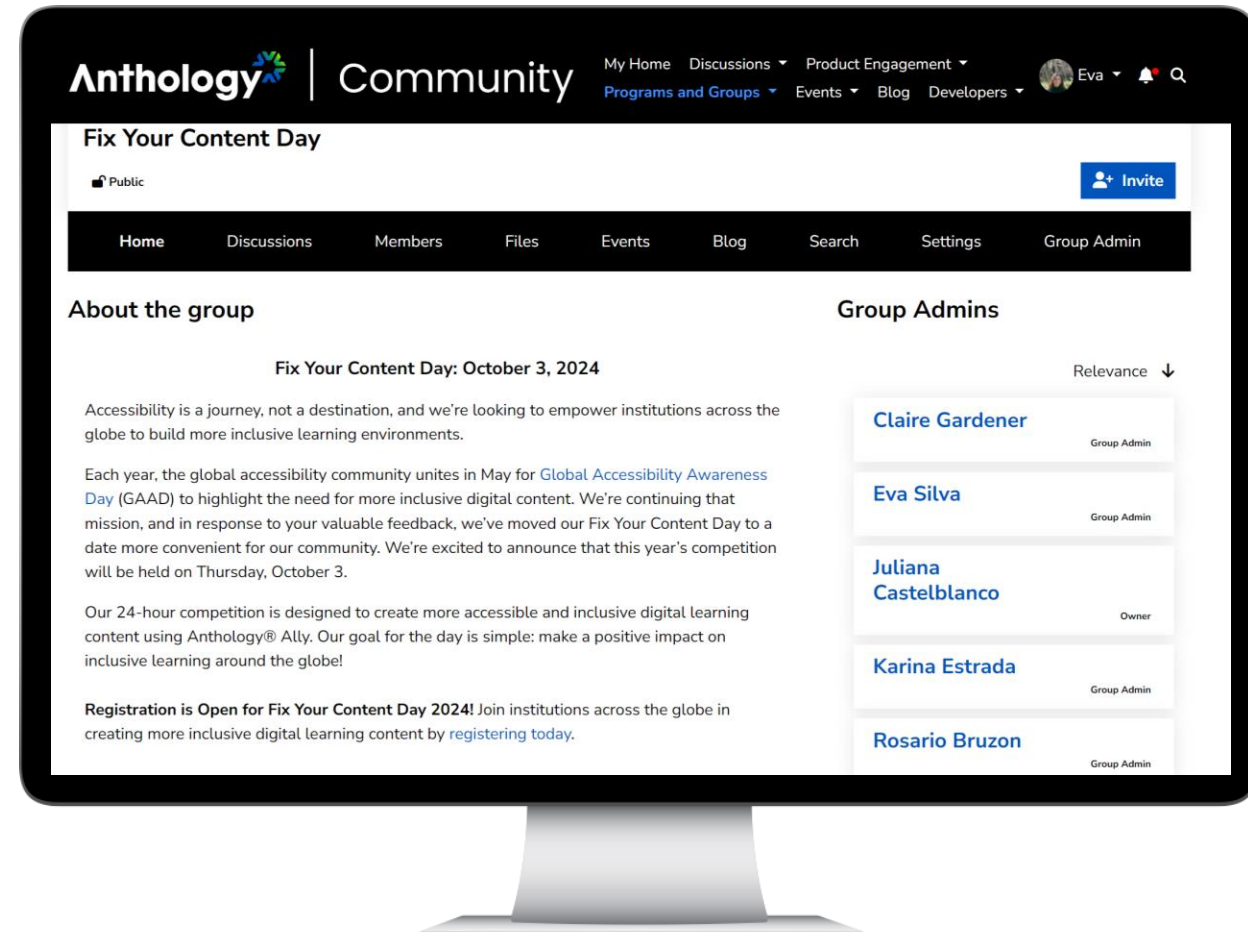
- Drive awareness of the importance of accessibility in delivering the most inclusive learning experiences by improving the usability and readability of digital materials
- Get an immense sense of pride and satisfaction for contributing to making education more inclusive for all
- Become an accessibility champion and have the opportunity to win a Fix Your Content Day trophy, global recognition, and rights to be seen as a true hero of inclusive learning

# How can I stay involved with FYCD?

Question # 20

## Join the group in the Anthology Community!

- <https://community.anthology.com/groups/home/166>
- Create discussions, receive real time updates, and connect with other institutions across the globe!



## Questions? Contact Us!

Karina: [karina.estrada@anthology.com](mailto:karina.estrada@anthology.com)

Claire: [claire.gardener@anthology.com](mailto:claire.gardener@anthology.com)

Community: [community@anthology.com](mailto:community@anthology.com)

